

InRouter6x5 Series Quick Guide

First Edition, March 2013

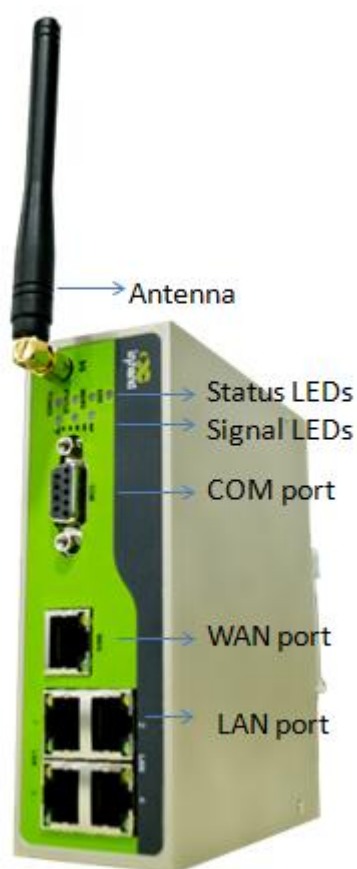


© 2013 InHand Networks, All rights reserved.
Republication without permission is prohibited.

Overview

This document is used to guide customer installing and operating InRouter6x5 Series industrial router which researched and developed by InHand Networks. Please make sure the product model and the accessories in the packaging (like power supply, antenna) before using. If you need buy SIM card, please consult the local operators.

Panel Layout



The Reset button, SIM card slot and power supply are on the top panel.

Quick Connection to Internet



Notice: all the operation should be carried out when InRouter keep interruption of power supply.

Step 1: Preparation



Insert SIM Card



Antenna Installation



Connection with PC

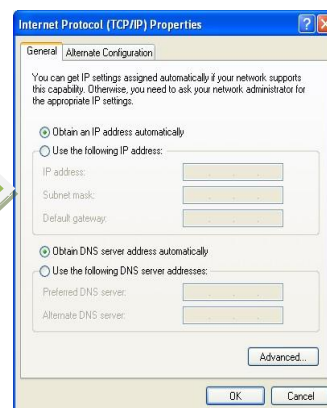
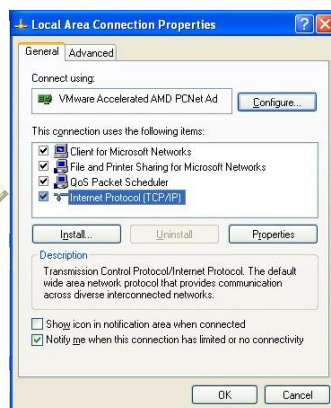
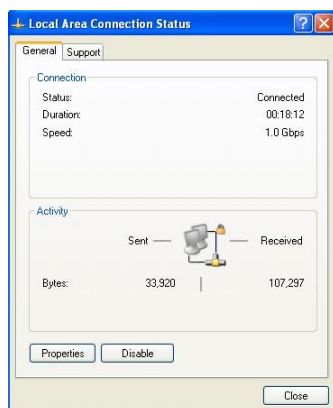


Power Supply (two type terminal)



Step 2 First Connect InRouter6x5 with Your PC

InRouter6x5 can auto-distribute IP address for PC. Please set the PC to automatically obtain IP address via DHCP. (Based on the Windows Operation System):



Open "Control Panel"→
"Network Connections",
then enter "Local Area
Connection Status" screen.

Click "Properties",
enter "Local Area
Connection
Properties" screen.

Choose "Internet Protocol
(TCP/IP)", click "Properties"
button to choose "Obtain IP
address automatically.

Step 3: Start to configure your InRouter6x5 (Optional)

After you have finished the former steps, you can configure the InRouter:

Router Login

Username

Password

Login



InHand Networks

System	Network	Services	Firewall	QoS	VPN
LAN					
MAC Address	DNS	18:05:00:78:D7	Default		
IP Address	DDNS	192.168.2.1			
Netmask	Static Route	255.255.0			
MTU	Default	1500			
Detection host	0.0.0.0				

Open IE browser, input the default IP address of the InRouter:
“http://192.168.2.1”. Input “username”
 (default: **adm**) and the “password”
 (default: **123456**), and then click “login”

Change the IP configuration:
 If you want to change the IP address of InRouter6x5, click “Network”→“LAN”, change the IP address you need.

Notices:

- 1 Please click “apply” to activate your configuration after finished configuration.
- 2 You need set your PC in the same subnet after resetting new IP address.

Step 4: Connect InRouter with Internet

Following the configuration steps below to enable InRouter6x5 to connect to Internet.

InHand Networks

System	Network	Services	Firewall	QoS	VPN	Tools	Status
Dialup							
Enable	<input checked="" type="checkbox"/>						
Time schedule	ALL <input checked="" type="checkbox"/> Schedule Management						
Shared Connection(NAT)	<input checked="" type="checkbox"/>						
Network Provider (ISP)	Custom <input checked="" type="checkbox"/> Manage						
APN	uninet						
Access Number	*99***1#						
Username	gprs						
Password	***						
Primary Profile Retries	0 (0: always)						
Network Select Type	Auto						
Band	ALL						
Static IP	<input type="checkbox"/>						
Connection Mode	Always Online						
Redial Interval	30 Seconds						
Show Advanced Options	<input type="checkbox"/>						
<input type="button" value="Apply"/> <input type="button" value="Cancel"/>							



Web Images Videos Maps News Shopping Gmail more

Google

Google Search I'm Feeling Lucky

Advertising Programs Business Solutions About Google Go to Google China

© 2010 Privacy

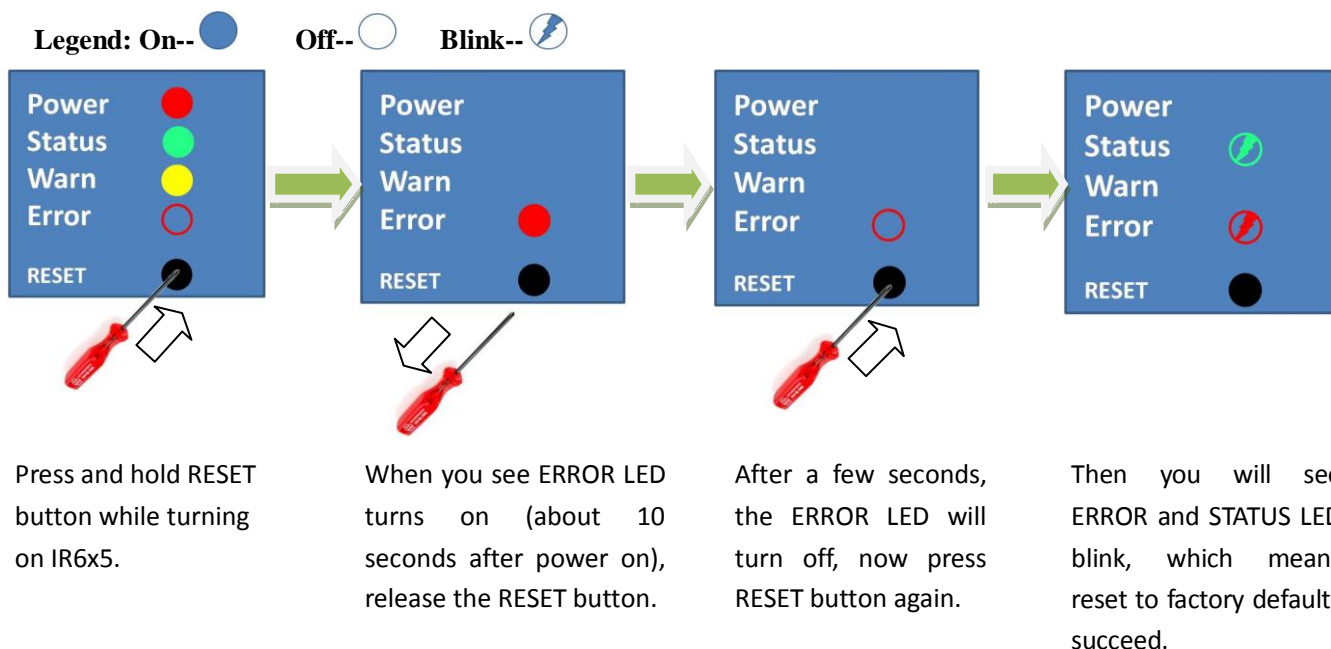
Click “Network”→“Dialup”, enter dialup configuration web. **Please check the APN, Dialup Number, Username and Password.**

Dialup Number, Username and Password are provided by local mobile operator.

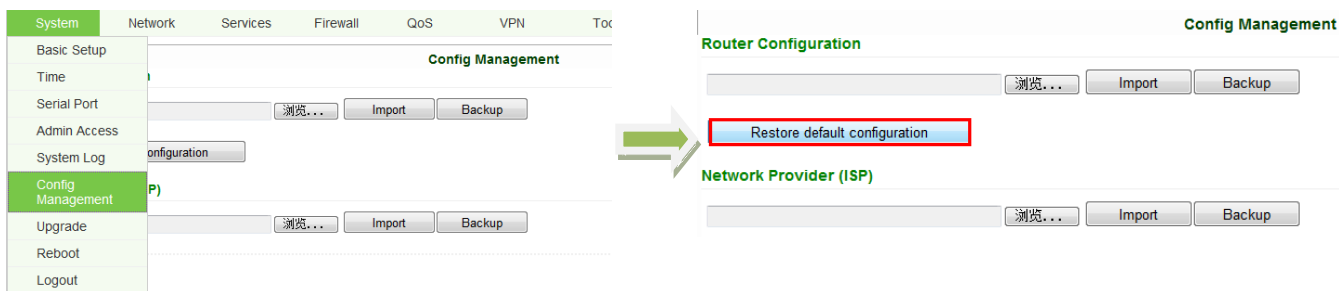
After correct configuration, InRouter6x5 can now connect with Internet. Open IE Browser, input www.google.com, you can access the Google home page.

Reset to Factory Defaults

Hardware Method



Web Method



Notice: After restore default configuration, please REBOOT device.

Description of LED

Description of LED panel

Legend: On--● Off--○ Blink--⚡



Power on



Start to run firmware



Begin dial to Internet



Connect to internet



Upgrading firmware

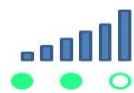


Restore factory default

Description of Signal Status LED



Signal: 1-9 (bad signal level, route cannot work, please check the antenna and local signal level)



Signal: 10-19 (Router work normally under this signal level)



Signal: 20-31 (Perfect signal level)

Copyright © 2013 InHand Networks, All rights reserved.

Tel: +86-010-64391099

Fax: 86-10-64399872

Address: Wangjing Science Park, Road Lizezhong, Chaoyang District, Beijing, P. R. C, 100102

Website: <http://www.inhandnetworks.com>

Email: info@inhandnetworks.com

Subject to alterations without notice.

