

Shuttle Biometric System BR06

Shuttle has proven its experience in the field of biometric systems for many years with the HR70 predecessor being implemented at Taipei International Airport. The BR06 is the newly introduced biometric system, an all-in-one fuss-free solution with a stylish design. It brings an easy-to-use interface and provides non-invasive, non-contact intelligent face recognition features. The BR06 is equipped with a high performance recognition algorithm to improve biometric processing and recognition speeds for highly accurate results. Moreover, the BR06 has a larger user database, low power consumption and is good value for money. The system also provides fingerprint and RFID multi-recognition.

Feature Highlights

Design	<ul style="list-style-type: none"> • Dimensions: 230 mm x 210 mm x 30 mm • Weight: 0.7 kg net / 1 kg gross • Slim plastic chassis, black • Optional: Wall mount bracket (PV06)
OS	<ul style="list-style-type: none"> • FreeRTOS™ Real Time Operating System
CPU / RAM	<ul style="list-style-type: none"> • ITE 9866 SoC 800 MHz, 64 MB DDRII RAM
Storage	<ul style="list-style-type: none"> • 64 MB NOR Flash • 128 MB SLC NAND Flash
Front Panel	<ul style="list-style-type: none"> • 7" LCD (1024 x 600) – single-touch screen • 1x HD RGB Camera • 1x HD IR Camera with 2x IR LEDs • Fingerprint Reader, RFID Reader • Power LED • Microphone, 2W Mono speaker
Back Panel	<ul style="list-style-type: none"> • 1x USB 2.0 (protected) • 1x RJ45 10/100 Mbit LAN • Phoenix contact (20 pins in total) <ul style="list-style-type: none"> ○ 1x 12 V DC-in (2 wires) ○ Dry / 5~12 V DC Digital In (3-pin) ○ 2x Form A contact Relay output max. 2 A @ 24 VDC / 120 VAC (3-pin) ○ 1x Wiegand I/O (4-pin) ○ 1x RS-485 with isolation (2 wires) ○ 1x RS-232 (3 wires) • Anti-drop DC-input for power supply • Holes for VESA mount (100 x 100 mm) • Reset button
Power Supply (2 Methods)	<ul style="list-style-type: none"> • 1) External 24 W power adapter Input: 100~240 VAC, Output: 12 VDC / 2 A • 2) 12 V / 2 A DC-IN with Phoenix Conn.
Multi Recognition	<ul style="list-style-type: none"> • 1) Face recognition • 2) Face recognition + fingerprint • 3) Face recognition + RFID • 4) Face recognition + fingerprint + RFID
Other Features	<ul style="list-style-type: none"> • Auto power on • Fanless Cooling • Standalone Mode (coming soon) • Open SDK/API (coming soon)

Shuttle Biometric System **BR06**

Face
Recognition



RFID
Reader



Fingerprint
Sensor



Fanless



Touch



24/7



VESA



Images for illustration only.

Shuttle Biometric System BR06 – Front and Back Panel



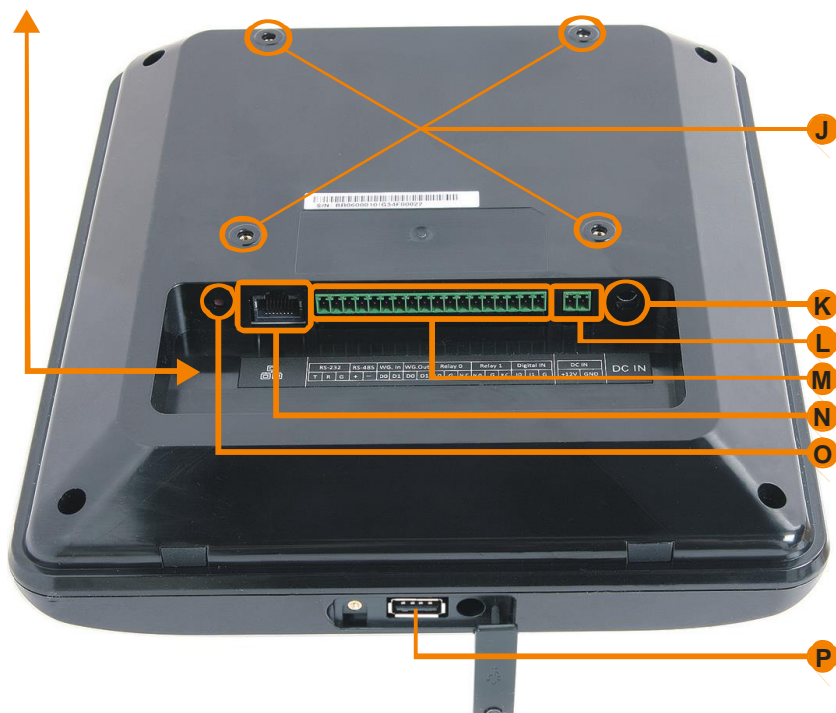
Front Panel

- A** Microphone
- B** Power LED
- C** 7" LCD Touch Display
- D** Colour Camera
- E** 2x IR LEDs
- F** IR Camera
- G** Fingerprint Sensor
- H** Speaker
- I** RFID Reader

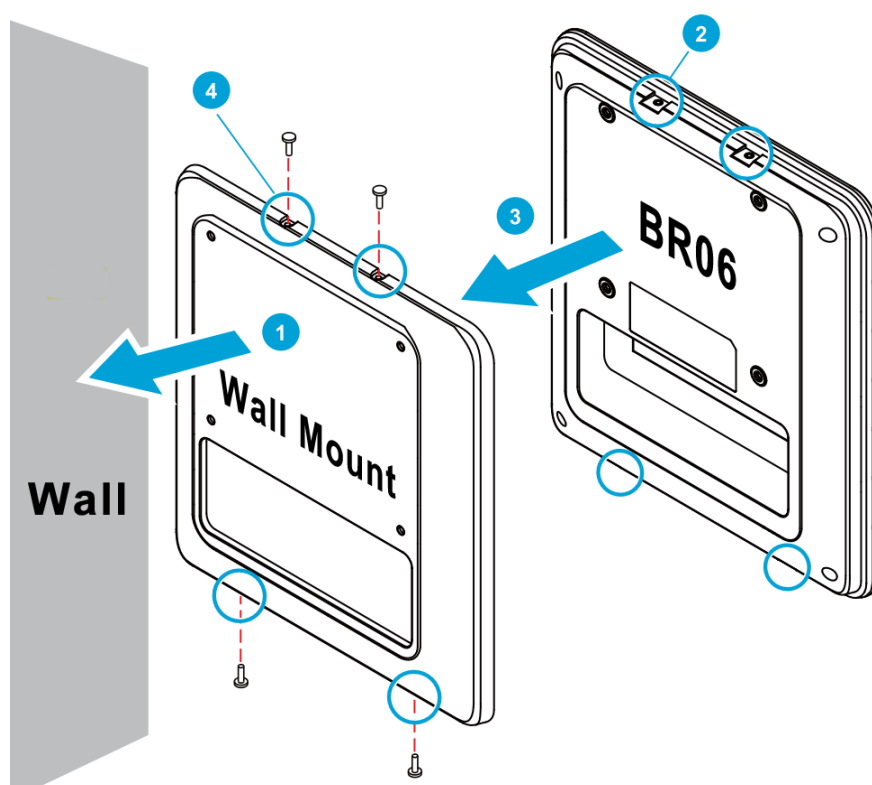
Back Panel

- J** Holes for VESA Mount
- K** DC Input Jack for an optional 12 V Power Adapter
- L** DC Input Phoenix Contact for 12 V power source
- M** Phoenix Contact with
 - RS-232 Port
 - RS-485 Port
 - Wiegand Input
 - Wiegand Output
 - 2x Relay Output
 - 2x Digital Input
- N** RJ45 LAN Port
- O** Hole with Reset Button
- P** USB 2.0 Port (hidden behind a cover)

RS-232			RS-485		WG. In		WG.Out		Relay 0			Relay 1			Digital IN			DC IN	
T	R	G	+	—	D0	D1	D0	D1	N.O.	G	N.C.	N.O.	G	N.C.	I0	I1	G	+12V	GND

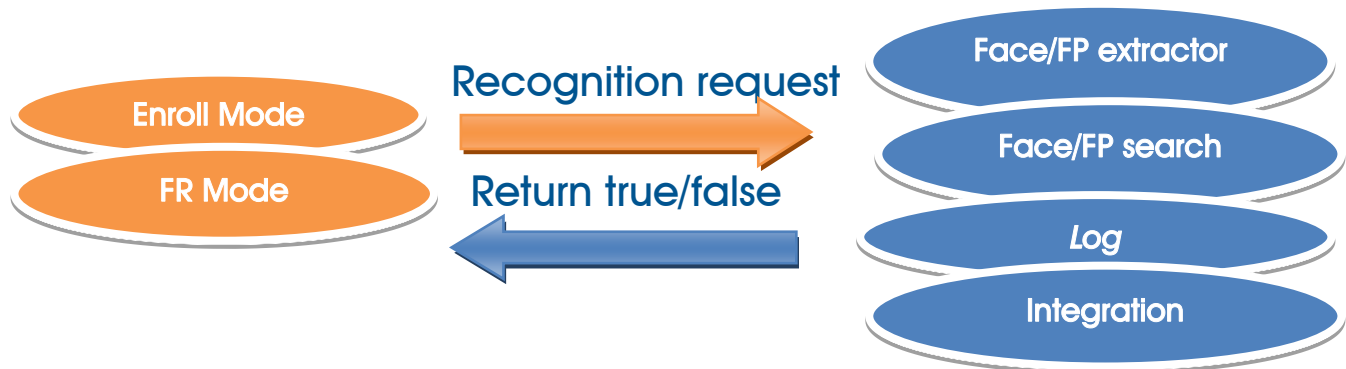
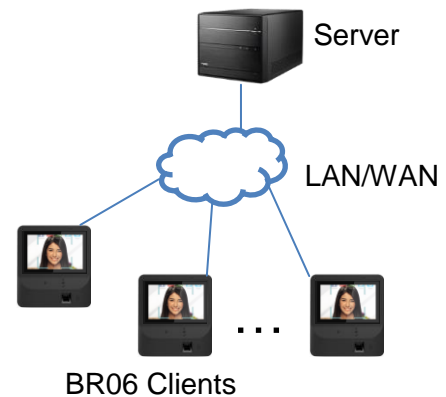


Optional Accessory: Wall Mount Kit (PV06)



Up to 60 Shuttle BR06 machines can connect to a server

- A single server can address up to 60 clients (BR06)
- Fast transfer speeds and highly accurate recognition by server
- All data securely saved on the server
- Comfortable configuration & monitoring of server and BR06 clients via web interface
- Face recognition license - up to 3000 persons
- Fingerprint recognition license - unlimited persons
- NFC SDK license - unlimited persons
- Server Software license
- Open API & SDK (coming soon)



Shuttle recommends the following configuration as a server *)

Hardware:

- Shuttle XPC cube SH170R6
- CPU: Intel i7 6700
- RAM: 32 GB
- Hard Disks: 2x 1 TB in Raid 1 (Mirroring)

Software

- CentOS 7 Linux with:
- Shuttle management software
- Facial recognition
- Fingerprint recognition



*) At lower system performance, detection speed may be delayed.

Shuttle Management Software for the Server

Have all BR06 clients in view and edit all settings comfortably via web interface:

SHUTTLE/BR06

Device List

Create new device

Search

MAC-Address	IP	Device Name	Status	Sync time	
192.168.100.110	192.168.100.110	192.168.100.110	●	2016-08-30 11:41:37	Edit Settings Delete
192.168.100.152	192.168.100.152	192.168.100.152	●	2016-08-22 16:54:12	Edit Settings Delete
192.168.100.171	192.168.100.171	192.168.100.171	●	2016-08-19 13:18:39	Edit Settings Delete
192.168.100.176	192.168.100.176	192.168.100.176	●	2016-09-09 17:35:30	Edit Settings Delete
192.168.100.183	192.168.100.183	192.168.100.183	●	2016-08-25 16:41:55	Edit Settings Delete
192.168.100.208	192.168.100.208	192.168.100.208	●	2016-08-25 15:36:51	Edit Settings Delete
SD	192.168.100.109	BBB	●	2016-08-30 19:18:21	Edit Settings Delete
	192.168.100.100	Default192.168.100.100	●	2016-09-12 19:34:50	Edit Settings Delete

Who is logged in? Always get the full picture:

SHUTTLE/BR06

FRUser Log List

Export

Search

No.	FRUserId	Name	Device Name	CreateDate	Note
41	tyuui	hjiyh	Default192.168.100.45	2016-09-12 08:23:49	Face identify pass
42			Default192.168.100.45	2016-09-12 08:23:46	Face identify fail : 'faces'
43			Default192.168.100.45	2016-09-12 08:23:44	Face identify fail : Similarity is too low
44			Default192.168.100.45	2016-09-12 08:23:40	Face identify fail : 'faces'
45	tyuui	hjiyh	Default192.168.100.45	2016-09-12 08:23:37	Face identify pass
46			Default192.168.100.45	2016-09-12 08:23:34	Face identify fail : 'faces'
47			Default192.168.100.45	2016-09-12 08:23:32	Face identify fail : 'faces'
48	tyuui	hjiyh	Default192.168.100.45	2016-09-12 08:23:28	Face identify pass
49			Default192.168.100.45	2016-09-12 08:23:25	Face identify fail : 'faces'
50			Default192.168.100.45	2016-09-12 08:23:22	Face identify fail : 'faces'

Shuttle Biometric System BR06 - Specifications

Chassis	<ul style="list-style-type: none"> • Dimensions: 230 (mm) x 210 (mm) x 30 (mm) • Weight: net weight 0.7 kg / gross weight 1 kg • Slim plastic chassis, black • Optional: wall mount bracket (PV06)
Processor	<ul style="list-style-type: none"> • ITE 9866 SoC 800 MHz + 64 MB RAM
Memory	<ul style="list-style-type: none"> • 64 MB RAM
Storage	<ul style="list-style-type: none"> • 64 MB NOR Flash • 128 MB SLC NAND Flash
Network	<ul style="list-style-type: none"> • Realtek ALC8201 • Supports 10/100 MB/s
Sound	<ul style="list-style-type: none"> • Realtek ALC5616 Audio Codec
IR Camera & IR LED	<ul style="list-style-type: none"> • The BR06 features an IR Camera & LED that can be used in high or low light conditions to keep facial recognition accurately.
RFID Reader Support	<ul style="list-style-type: none"> • Supports Mifare / NFC contactless card (13.56 MHz)
Frontpanel	<ul style="list-style-type: none"> • 7" LCD (1024 x 600) single touch display • 1x HD RGB camera • 1x HD IR camera with 2x IR LED • Fingerprint reader • RFID reader • Power LED • Microphone • 2 W mono speaker
Backpanel	<ul style="list-style-type: none"> • 1x USB 2.0 (protected) • 1x RJ45 LAN • Phoenix contact (total of 18 pins) • 2-pin Phoenix 12 V contact • 1x RS-232 (3 wires) • 1x RS-485 with isolation (2 wires) • 2x Form A contact Relay output (Max.2 A @ 24 V DC / 120 V AC) (3-pin) • 2x Dry / 5~12 V DC Digital In (3-pin) • Anti-drop DC input for power supply • VESA mount • Reset button
Power Supply	<ul style="list-style-type: none"> • 1) External 24 W power adapter - Input: 100~240 V AC, Output: 12 V DC / 2 A • 2) Phoenix contact 2pins power 12V

<i>Operating System RTOS</i>	<ul style="list-style-type: none"> • RTOS is an OS intended for real-time data processing with no buffering or delays. • RTOS is error-free which means it won't fail when performing tasks.
<i>Management</i>	<ul style="list-style-type: none"> • Server mode (over web server): <ul style="list-style-type: none"> ○ User management ○ Client (BR06) management ○ System information / settings ○ Log Update ○ Up to 60 clients (BR06) – per server ○ Import / Export ○ Device test
<i>Multi-Recognition</i>	<ul style="list-style-type: none"> • 1) Face recognition • 2) Face recognition + fingerprint • 3) Face recognition + RFID • 4) Face recognition + fingerprint + RFID
<i>Detection Height Range and Distance</i>	<ul style="list-style-type: none"> • Up to down 140cm • based on distance 40cm
<i>Face Recognition- Recognition Speed</i>	<ul style="list-style-type: none"> • 2-3 seconds
<i>Face Recognition- Recognize Rate</i>	<ul style="list-style-type: none"> • $FAR \leq 0.01\%$ • $FRR \leq 1\%$
<i>Face Recognition- Face Angle</i>	<ul style="list-style-type: none"> • Two axis ± 15degree
<i>Face Recognition- Standards</i>	<ul style="list-style-type: none"> • ISO/IEC19794-5:2005
<i>Numerous Interfaces for Diverse Applications</i>	<ul style="list-style-type: none"> • The BR06 features numerous built-in I/O interfaces (RS-232, RS-485, Wiegand, Relay out and digital in) that connect to relevant peripherals. This makes the BR06 easy to work with external devices and applications such as security host, access control host, card reader, door lock, alarm, door sensor etc.
<i>Auto power-on</i>	<ul style="list-style-type: none"> • The BR06 automatically powers on if power is applied.
<i>Fanless</i>	<ul style="list-style-type: none"> • The BR06 features fanless design to reduce the power consumption and eliminate the noise produced by fan as well as the cost of replacing fans.

<p><i>Wall mount bracket (optional)</i></p>	<ul style="list-style-type: none"> The bracket easily attaches the BR06 to walls, hides cables and prevents damage or destruction.
<p><i>VESA Mount</i></p>	<ul style="list-style-type: none"> The BR06 meets international VESA mounting standards.
<p><i>Other Features</i></p>	<ul style="list-style-type: none"> Auto power on Fanless Open SDK/API (coming soon)
<p><i>Free customisation (coming soon)</i></p>	<ul style="list-style-type: none"> Boot up logo change Recognition pass sound change GUI background logo change Welcome message change
<p><i>Other customisation options (coming soon)</i></p>	<ul style="list-style-type: none"> System integration Flow control modification New project cooperation
<p><i>Certifications</i></p>	<ul style="list-style-type: none"> EMI: CE, FCC, RCM, R&TTE Safety: CB, BSMI, ETL Other: RoHS, EuP Lot 6