

5GHz 300Mbps Hi-Power Outdoor Wireless Grid Bridge

WIS-G5250

WiD™

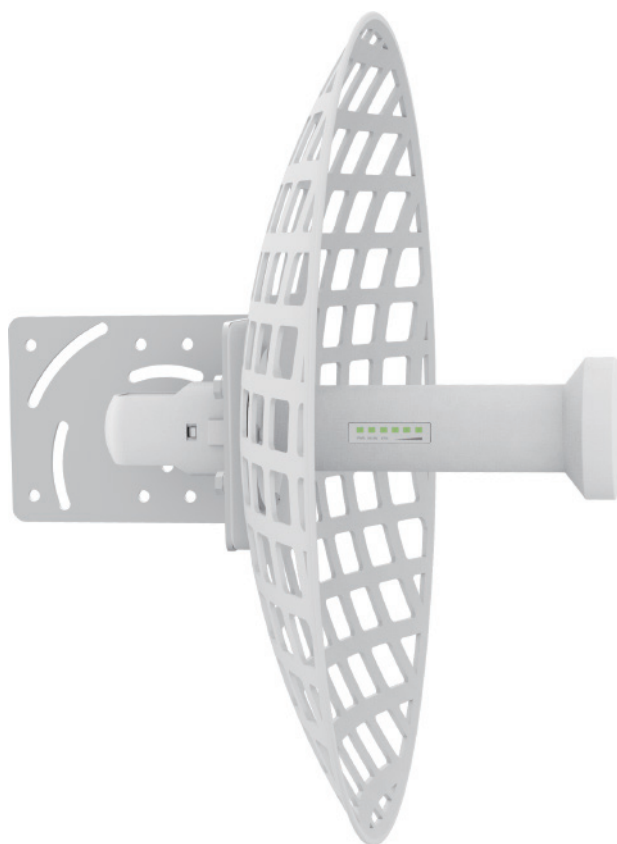
TDMA protocol

25dBi

dual-pola antenna

≈210Mbps+

real throughput



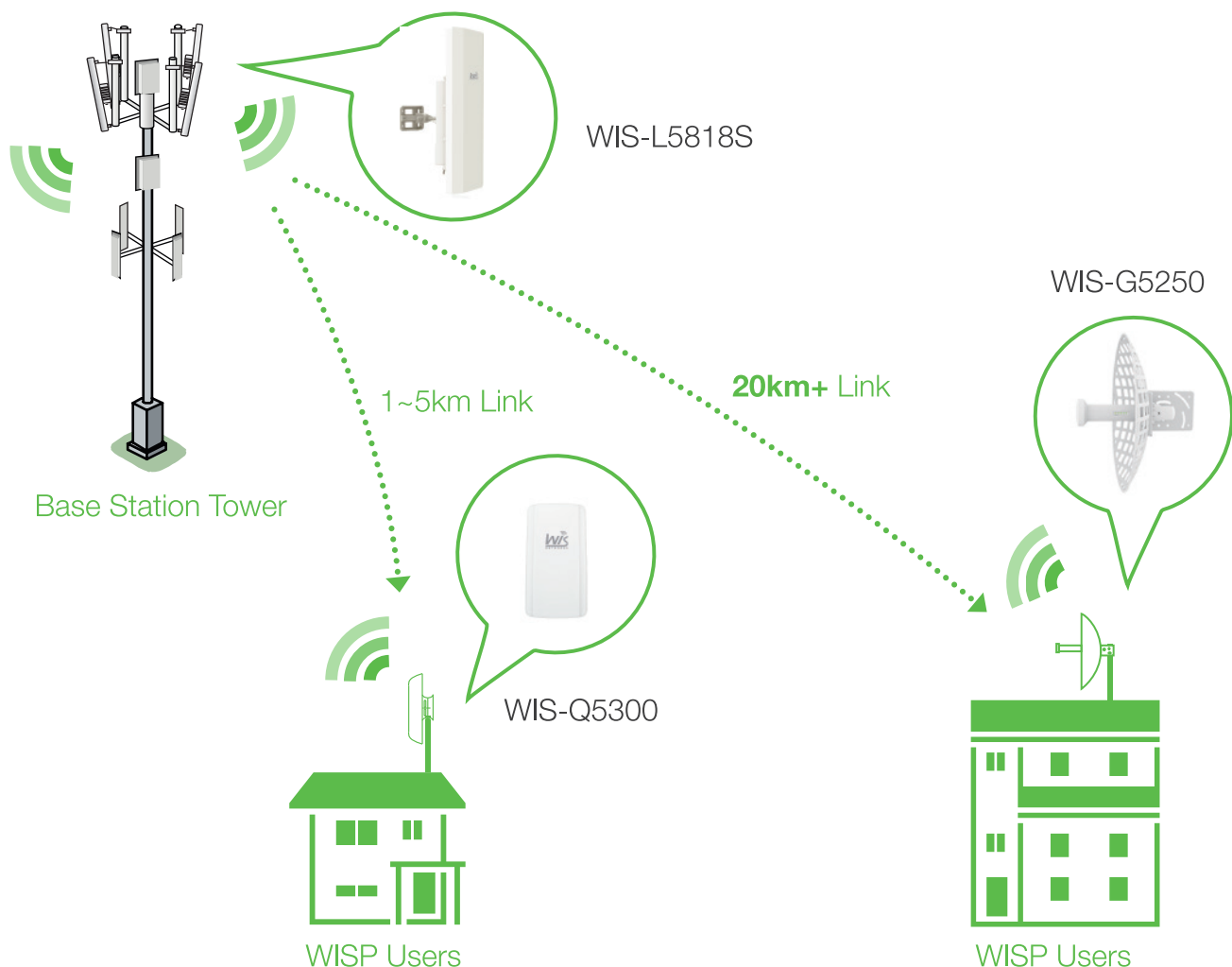
Product Overview

WIS-G5250 is a 300Mbps 2*2 MIMO Hi-Power outdoor wireless grid bridge for extremely long range point-to-point solutions. It is revolutionary radio-in-feed dish design with high performance, cost-effective and dedicated to long distance wireless network solutions. Featuring the revolutionary WiD TDMA technology, WIS-G5250 is fully compatible with Wisnetworks base station and CPE thus greatly improving the network scalability in throughput and latency. With 25dBi dual-polarized dish antenna, a pair of WIS-G5250 can easily build 50km+ long range wireless connection and keep a high speed rate. WIS-G5250 is best applied to rural wireless Internet, wireless backhaul and other industrial wireless solutions.

Features and Benefits

- WiD TDMA greatly improves the network scalability in throughput and latency
- 25dBi dual-polarized dish antenna to build robust long range wireless PtP link
- Gigabit LAN port helps get maximum wireless performance
- Grid design largely increases the wind resistance performance
- Compliant with 802.11a/n, speed up to 300Mbps
- High output transmission power and receive sensitivity optimized
- Passive POE(24VDC) for flexible deployment
- Weather-proof design for outdoor environment
- Up to16kV ESD protection

Network Example



The WIS-G5250 as a station in PtMP WISP connection.

Specification

> Radio

- 802.11a/n radio (Atheros 600MHz)
- Speed up to 300 Mbps
- Frequency Range: 5.150-5.250GHz
5.250-5.350GHz (Support DFS)
5.470-5.725GHz (Support DFS)
5.725-5.825GHz
- Tx Power up to 27dBm
- Rx Sensitivity 300M: -74dBm@10% PER
54M: -78dBm@10% PER
1M: -98dBm@10% PER

> Antenna

- 25dBi dual-polarized dish antenna
- Beamwidth(HPBW) Horizontal: 11°, Vertical: 11°
- Open space up to 1~25km (dependent)

>Physical Parameters

- Dimension: 228*228*76mm
- Wight: 1.5kg
- Enclosure: Die-cast Aluminum
- ESD Protection: 16kV
- Working Temp: -40 ~ 70°C
- Storage Temp: -40 ~85°C
- Working Humidity: 10%~95% non-condensing

> Power

- 24VDC, 0.75A
- Power Consumption: 6W

> Interfaces

- 1x 10/100/1000 Base-T Ethernet (Gigabit LAN with Passive PoE)
- Grounding Terminal

>Security

- Integrated Firewall
- WPA/WPA2;WPA-PSK/WPA2-PSK (AES/TKIP) Encryption; 64/128-bit WEP;

>LED

- Power:On/Off
- ETH:On/Off/Flashing
- WLAN:On/Off/Flashing
- RSSI Signal: 1,2,3

>Warranty

- 2 Years

>Certification

- CE, RoHS

>Package content

- WIS-G5250 Feedhorn Radio
- 25dBi Dish
- Quick Setup Guide
- Power Adapter with Passive PoE
- Mounting bracket & kits

Antenna Information

